



### Features

iS-1500 Digital Signage System is a compact yet sophisticated system equipped with the professional Digital Signage software for content creation, scheduling, and remote management.

Furthermore, it's capable of managing many of iS-1500 players as a group at the same time without setting up additional servers.

Designed with fanless and low power consumption properties, which is ideal for 24/7 operations.

### Product Highlights

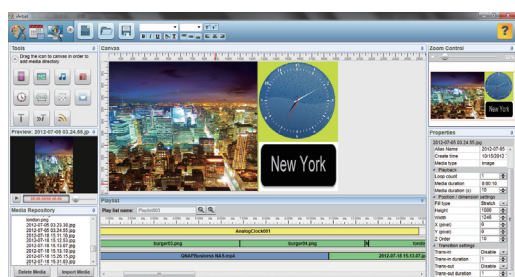
- All-in-one turnkey system
- Lifelong subscription free (one time investment).
- De-duplication feature makes plan publishing faster and effective.
- No firewall/router configuration required.
- Perform mission and power on/off automatically instead of requiring complicated manual configurations.
- Multi-layer display provides more diversified layout arrangements.
- Central remote system management lets users save more on-site cost.
- iSignager supports multiple player management, and users can get the complete information directly from the iCommander.

## iSignager Digital Signage System



### iArtist

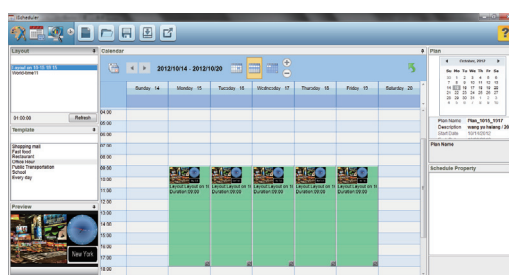
iArtist is a powerful and flexible layout design tool. It enables users to design a multi-zone layout and define file playback sequences, timing, and transition effects. In addition, users can use the intuitive drag-and-drop operation to create their own templates or layouts. The timeline view lets users define playlists intuitively.



### iScheduler

iScheduler is a full range scheduling tool for the layout playback. It supports hourly, daily, weekly, and monthly based scheduling.

Several scheduling templates are provided for users' quick choices. Users can easily do scheduling by putting their desired layouts into time slots. Drag and drop to determine the playback length in the calendar view slots. The precise time definition of the playback looping is also available by right clicking the slot for the detailed property settings.



### iCommander

iCommander is an administration software for remote monitoring, which is capable of managing many units of players at the same time.

iCommander presents the monitoring status by a dynamically refreshing dashboard. It delivers essential information for routine checks.

Further detailed information required for maintenance or troubleshooting is also provided by the iCommander.

#### ■ Dashboard

Building a digital signage network is usually the easy part. However, running a system successfully day after day requires constant vigilance. All of those screens and signage players need a watchful eye just in case something goes wrong. The dashboard panel feature gives you the proactive tools that enable you to monitor a digital signage network conveniently on your computer.

#### ■ Player status

Player status provides real-time information, such as registration, IP, MAC address, current layout, and last heartbeat.

#### ■ Player monitor

A summary of a player's real-time information and configuration.

#### ■ Command task

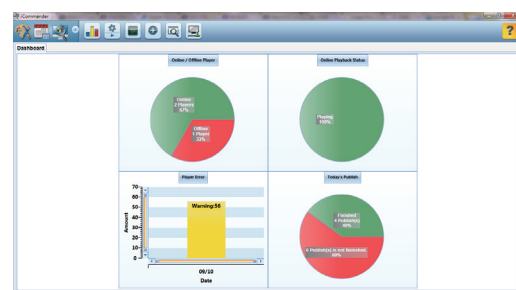
Arrange the player management command sets, such as scheduling on/off and removing media files.

#### ■ Log viewer

Provide the detailed player logs, including the system logs and playback related information.

#### ■ Publish status

List with the transfer progress and expiration time of plan publishing.





## Content display

- Dynamically controlled by the predefined schedule.
- Highly integrated with video wall product lines iVW-FD122/ iVW-FD133 / iVW-FH122. Video wall configurations can be controlled by the iSignager players.
- Real-time RSS can be delivered to the connected target displays within seconds.
- Rich Text provides various types for text and banners.
- Support 3 image transition types.
- Intuitive playlist panel with drag-and-drop design.
- Players can be controlled by the Web console for the following operations:
  - Configuration
  - Status report
  - Playback control
  - Schedule power on/off

## A smart choice for your digital signage

- iSignager makes remote monitoring easy and simple; heartbeat packets for detecting the player's on/offline status, online playback status to check up the player error messages and tasks for today's publishing.
- iSignager saves your on-site management cost by scheduling on/off your remote players without acquiring any on-site efforts!
- iSignager retrieves the on-going content playback status.
- iSignager enables you to perform troubleshooting remotely by retrieving some important indexes, such as CPU temperature. Whenever an abnormal situation occurs, the hardware watchdog timer will trigger the system restart automatically. In the iCommander, you can also choose to restore configurations or recover the system immediately, whenever it is necessary.
- Support Full HD(1080p) video playback.
- Support HDMI 1.3a output.
- Support Flash and RSS content display.

## Supported Multimedia Objects:

- Video: Support MPEG-1/2/4, WMV9, H.264, FLV, VC-1 video formats.
- Audio: Support MPEG-1, MP3, WMA, WAV.
- Image: Support BMP, JPG, JPEG, JPE, PNG.
- Text: Support messages from text strings, text files, and RSS  
The scrolling speed is adjustable..
- Flash: Support Flash 9.
- Clock: Support digital, analog, and multiple real-time clocks.

HDMI ready



**Hardware spec.** With the a combination of iSignage software and QNAP digital signage player's hardware capability, we provide a complete digital signage solution for business needs.

<b>Video Output</b>	1 x HDMI 1.3a
<b>Maximum Output Resolution</b>	Video up to 1920 x 1080 (1080p)
<b>Audio Output</b>	1 x RCA L/R
	1 x S/PDIF
<b>Storage</b>	1 x 8GB SDHC card
	1 x 2.5" SSD bay
<b>LAN</b>	1 x 10/100/1000 Mbps Ethernet
<b>WLAN (optional)</b>	USB dongle, 802.11b/g/n, WEP/WPA/WPA2
<b>Remote Control (optional)</b>	1 x 2.5mm phone jack for the external IR remote receiver
<b>USB</b>	2 x USB 2.0
<b>Serial</b>	1 x RS-232
<b>Watchdog</b>	Internal hardware watchdog for error recovery
<b>Buttons</b>	1 x power button
	1 x reset button (reset to factory default)
<b>Power</b>	External power adaptor, 12V DC
<b>Dimension (W x D x H mm)</b>	188 x 134 x 46
<b>Mounting</b>	VESA 75
<b>Operating Temperature</b>	0°C to 45°C with air flow
<b>Certification</b>	CE, FCC